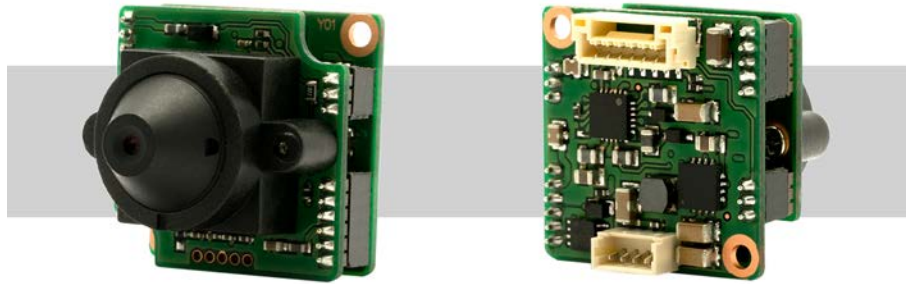


# WAT-910HX MBD (P3.3) 1/3" Super High Sensitivity Miniature Board Camera

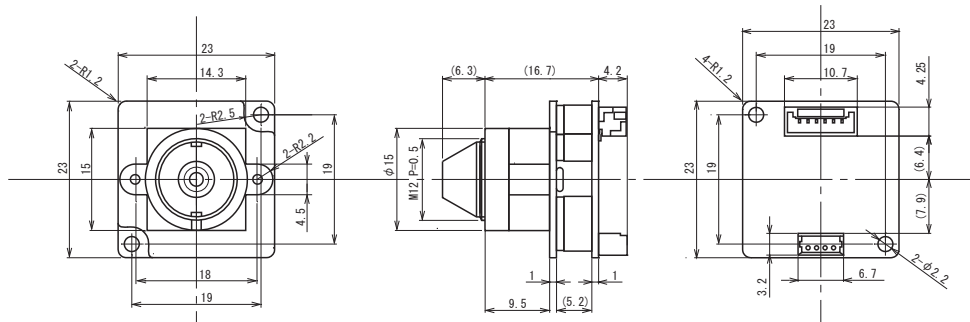
Ultra-compact design only 23 x 23mm for limited space and embedded application



## Key features

- Advanced setting available by OSD (On-Screen Display) through an optional controller
  - Build-in M12 Conical Pinhole lens P3.3 (f=3.3mm F2.4)
- ※Miniature pinhole lenses cannot be interchanged with miniature glass lenses and vice versa

## Dimensions



## Specifications

Video standard		EIA	CCIR
Pick-up element		1/3 inch interline transfer CCD image sensor	
Number of total pixels		811(H) × 507(V)	795(H) × 595(V)
Number of effective pixels		768(H) × 494(V)	752(H) × 582(V)
Unit cell size		6.4μm(H) × 7.5μm(V)	6.5μm(H) × 6.3μm(V)
Synchronizing system		Internal	
Scanning system		2:1 interlace	
Video output		Composite: 1.0 V(p-p) 75Ω, Unbalanced	
Resolution (H)		More than 570TVL (Center)	
Minimum illumination		0.00009 lx F1.8 (AGC=48dB, SENS UP ON)	
S/N		More than 50dB	
Function settings		OSD (On Screen Display) operated by optional remote controller	
AE mode	Fixed	x2, x4, x8, x16, x32, x64, x128, x256 (field)	
		1/60, 1/120 sec.	1/50, 1/100 sec.
		1/250, 1/500, 1/1000, 1/2000, 1/4000, 1/10000 sec.	
	EI	1/60 - 1/100000 sec.	1/50 - 1/100000 sec.
Flickerless		8FLD - 1/100000 sec. (SENS UP ON)	
AGC		OFF, ON, AUTO	
MGC		0 - 42dB (Selectable)	
Gamma characteristics		6, 12, 18, 24, 30, 36, 42, 48dB	
Noise reduction		$\gamma \approx 0.45$	
Wide dynamic range		2D+3DNR (Level selectable)	
Motion detection		ON (ATR) / OFF	
Back light compensation		ON / OFF	
White blemish correction		OFF / BLC / HLC	
Defog		Max 64 dots	
Digital zoom		ON (Level selectable) / OFF	
Privacy mask		ON (x1 - x256, Magnification selectable) / OFF	
Mirror image		15 masks	
Sharpness		OFF / H-FLIP / V-FLIP / HV-FLIP	
Power supply		0 - 15 (SHARPNESS)	
Power consumption		DC+12V±10%	
Operating temperature		0.96W (80mA)	
Storage temperature		-10 - +50°C	
Operating / Storage humidity		-30 - +70°C	
Lens mount		95% RH or less (Without condensation)	
Standard lens		M12 P=0.5	
Weight		DW-33524A (f3.3 F2.4)	
Accessories		Approx. 10g	
		4P cable	

Accessories Options

