

# WAT-03U2D

1/3" High Sensitivity USB2.0 HD Water Resistant Camera

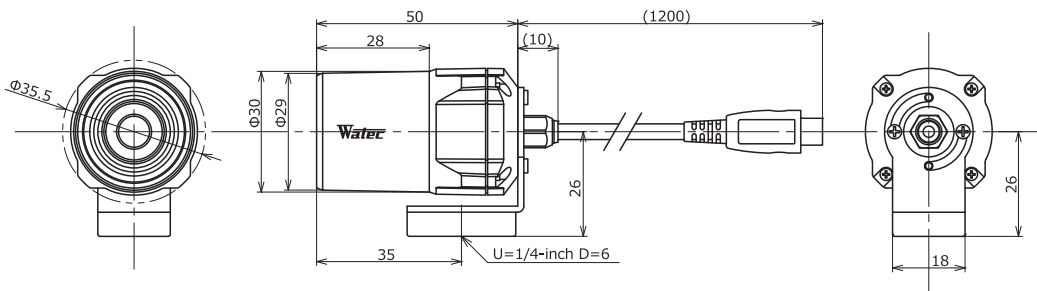
IPX7 Water resistance



## Key features

- High Sensitivity 1.3 Mega pixel CMOS sensor
- Min. illumination 0.04 lx F2.0 (AGC ON=42dB, Shutter=OFF)  
0.01 lx F2.0 (AGC ON=42dB, Shutter=1/7.5 sec.)
- Frame rate : 30fps (HD)、60fps (VGA)
- Water resistant structure for outdoor use

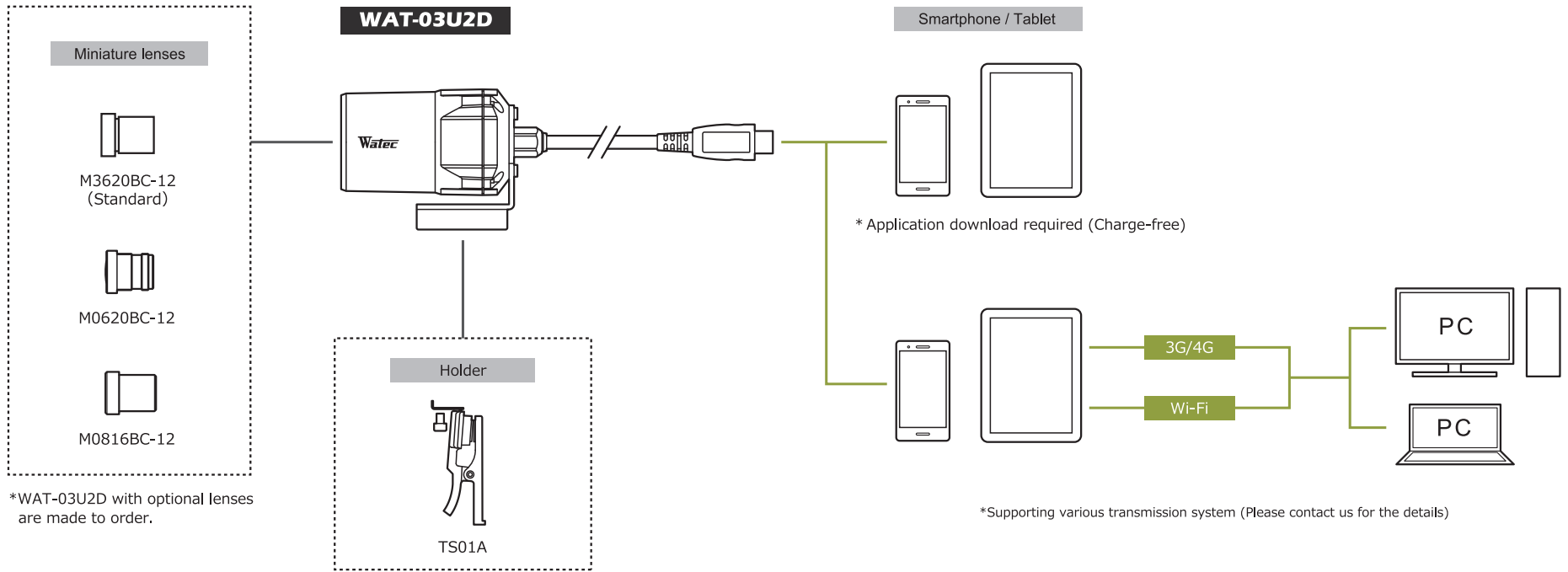
## Dimensions



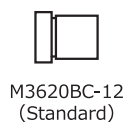
## Specifications

Pick-up element	1/3 inch CMOS image sensor	
Number of effective pixels	1305(H) × 977(V)	
Unit cell size	3.75μm(H) × 3.75μm(V)	
Imaging system	RGB primary color bayer arrangement mosaic filters on chip	
Synchronizing system	Internal	
Scanning system	Progressive	
Output size	1280×960, 1280×720, 640×480, 320×240	
Max. frame rate	60 fps	
Video compression	MJPEG, YUY2	
Video output	USB Video Class (Compatible)	
Minimum illumination	0.04 lx F2.0 (AGC ON=42dB, Shutter=OFF)	
	0.01 lx F2.0 (AGC ON=42dB, Shutter=1/7.5 sec.)	
S/N	-	
Function settings	Camera Viewer	
AE mode	Fixed	1/15, 1/7.5, 1/4, 1/2, 1, 2 sec.
	EI	1/30, 1/60, 1/120, 1/250, 1/500, 1/1000, 1/2000, 1/4000, 1/8000 sec.
		1/30 - 1/8000 sec.
White balance		ATW, MWB
AGC	ON	0 - 42dB
	OFF	-
MGC	0 - 72dB (1dB step)	
Gamma characteristics	γ=USER (Level adjustable)	
Noise reduction	-	
Wide dynamic range	-	
Lens iris	-	
Back light compensation	BLC	
White blemish correction	-	
Sharpness	Level adjustable	
Defog	-	
Digital zoom	-	
Privacy mask	-	
Mirror image	-	
Freeze	-	
Motion detection	-	
Neg.image	-	
Interface	USB (High speed)	
Power supply	USB +5V	
Power consumption	0.75W (150mA)	
Operating temperature	-10 - +50°C	
Storage temperature	-30 - +70°C	
Operating / Storage humidity	95% RH or less (Without condensation)	
Standard lens	M3620BC-12 (f3.6 F2.0)	
Cable length	1.2m (Max. 3.0m)	
Weight	Approx. 85g	
Accessories	-	
Min. System Requirements	CPU	800MHz or faster
	RAM	512MB or larger
	Others	USB2.0 Port
Recommended System Specifications	CPU	Intel® Core TM i Series
	RAM	2GB or larger
	Others	USB2.0 Port, 1920×1080 or better resolution display
Operation Confirmed OS	Windows 7 32bit/64bit, Windows 8 32bit/64bit, Windows 8.1 32bit/64bit, Windows 10 32bit/64bit, Android 4.0 or newer	

Options



Miniature lenses



M3620BC-12 (Standard)

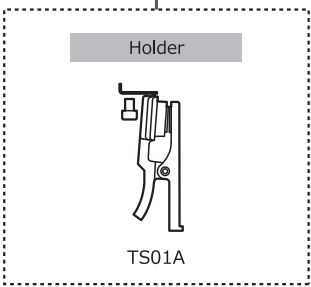
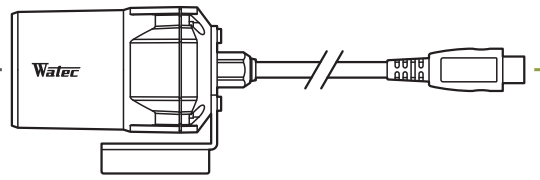


M0620BC-12



M0816BC-12

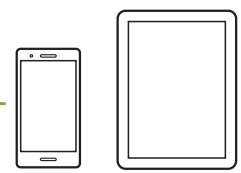
WAT-03U2D



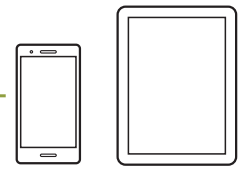
Holder

TS01A

Smartphone / Tablet

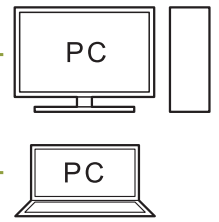


\* Application download required (Charge-free)



3G/4G

Wi-Fi



PC

PC

\*WAT-03U2D with optional lenses are made to order.

\*Supporting various transmission system (Please contact us for the details)