

# WAT-660E (G3.8) 1/4" Miniature Camera

Compact square camera with built-in lens

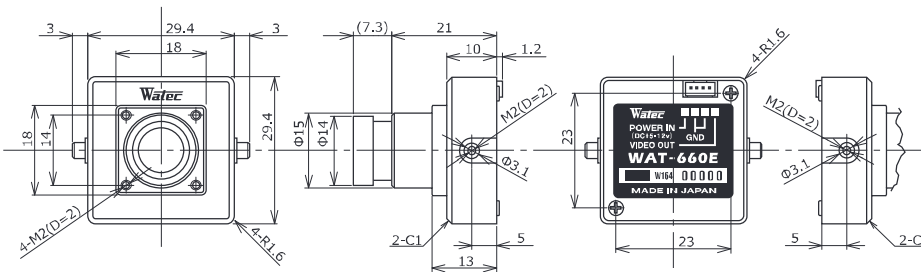
NEW



## Key features

- Min.illumination 0.002 lx F2.0 (AGC ON=42dB, Shutter=OFF)
- Wide input voltage range (\*DC 5V to 12V)
- Various optional M12 lenses available \*Glass lenses and pinhole lens are not interchangeable

## Dimensions



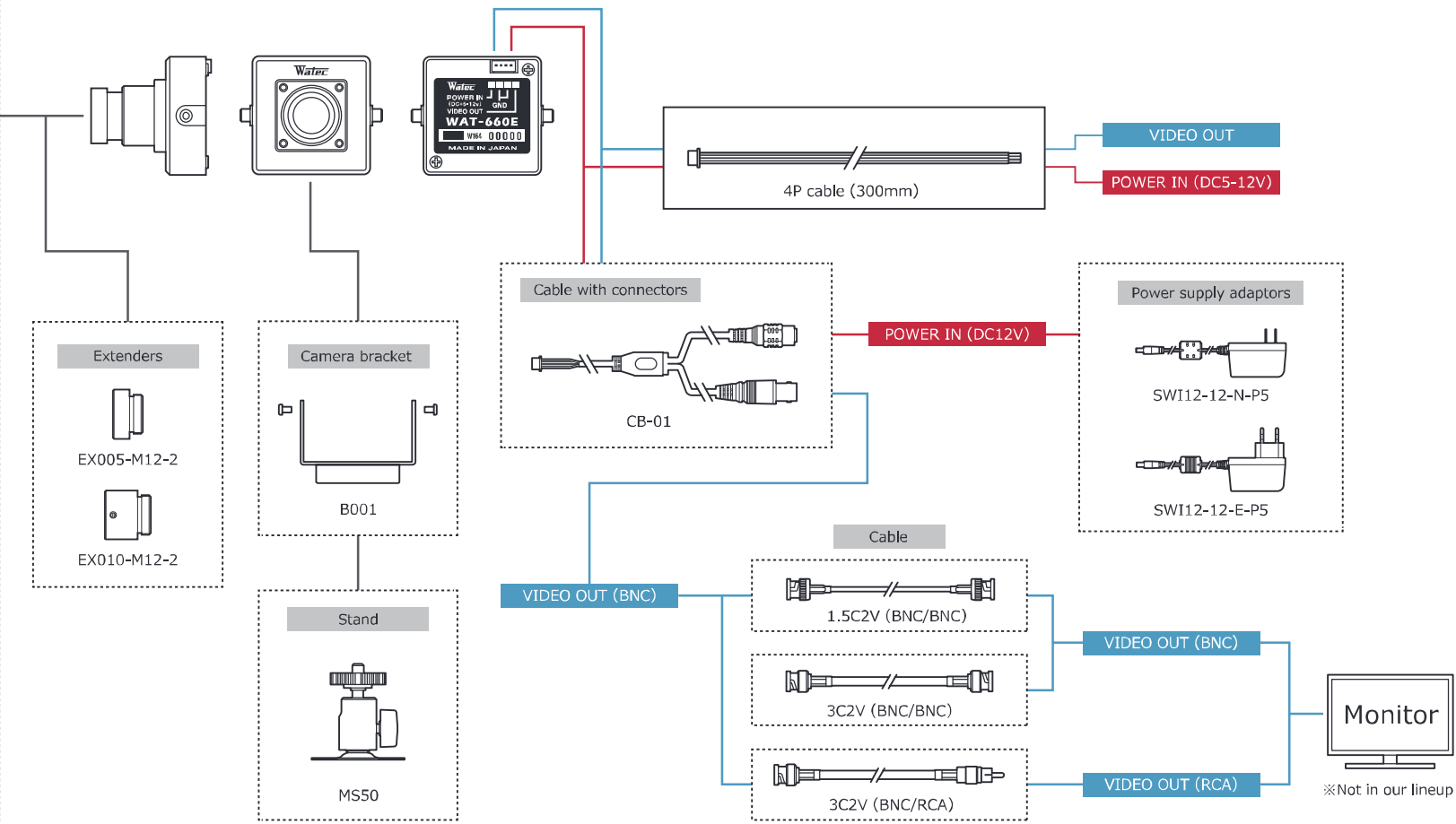
## Specifications

	EIA	CCIR	
Video standard	EIA	CCIR	
Pick-up element	1/4 inch CMOS image sensor		
Number of effective pixels	648(H) × 488(V)		
Unit cell size	5.6μm(H) × 5.6μm(V)		
Synchronizing system	Internal		
Scanning system	Progressive		
Video output	Composite video, 1.0 V(p-p) 75Ω (Unbalanced)		
Resolution (H)	More than 480TVL (Center)		
Minimum illumination	0.002 lx F2.0 (AGC ON=42dB, Shutter=OFF)		
S/N	More than 52dB (AGC OFF=0dB, γ=1.0)		
Function settings	-		
AE mode	Fixed	-	
	EI	1/60 - 1/100000 sec.	1/50 - 1/100000 sec.
AGC	ON	0 - 42dB	
	OFF	-	
MGC	-		
Gamma characteristics	γ=0.45		
Video level	100IRE		
Noise reduction	-		
Wide dynamic range	-		
Lens iris	-		
Back light compensation	BLC		
White blemish correction	-		
Sharpness	-		
Defog	-		
Digital zoom	-		
Privacy mask	-		
Mirror image	-		
Freeze	-		
Motion detection	-		
Neg.image	-		
Interface	4P connector (Composite Video, Power in)		
Power supply	DC+5V - 12V		
Power consumption	0.45W/90mA(DC+5V), 0.45W/37.5mA(DC+12V)		
Operating temperature	-10 - +50°C		
Storage temperature	-30 - +70°C		
Operating / Storage humidity	95% RH or less (Without condensation)		
Lens mount	M12 P=0.5		
Standard lens	3820BC-12 (f3.8 F2.0)		
Weight	Approx. 33g		
Accessories	4P cable		

Accessories Options

- Miniature lenses
- 2520BC-12
  - 2920BC-12
  - 3820BC-12 (Standard)
  - 0625BC-12
  - 0820BC-12
  - 1220BC-12
  - M1616BC-12
  - 2540EX014-M12

### WAT-660E (G3.8)



Monitor  
※Not in our lineup