



WAT-03U2

1/3" Compact, High Sensitivity, USB2.0, HD Color Camera





Top Highlights

- High Sensitivity
- High Frame Rate
- Selectable Output Size
- Compact
- USB Video Class
- USB Bus Power
- Various Function Settings
- Capable Updating F/W
- Confirmed EMC Test Standards

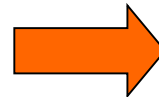


High Sensitivity

- Minimum Illumination 0.02lx (Approx. 10 times of WAT-01U2)



WAT-01U2



Approx.
10 times



WAT-03U2

※Photographing Environment: Illumination 0.1lx

(Camera Settings: Sutter Speed 1/30s, Gain 42dB)

- Setting max shutter speed (x64FRM(2.0s)) and max gain (72db) enables higher sensitivity.
(※Under Manual Exposure Control)

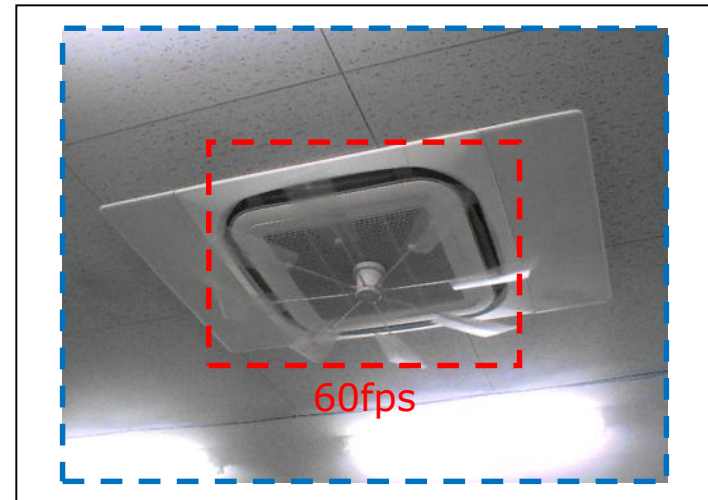


High Frame Rate

- Max frame rate 60fps enables smooth moving images.
(※Compressed Format: MJPG
Output Size: VGA or Quarter-VGA)



60fps



30fps

※In order to cut and output the central part of the screen,
the angle of view is different from other frame rates.



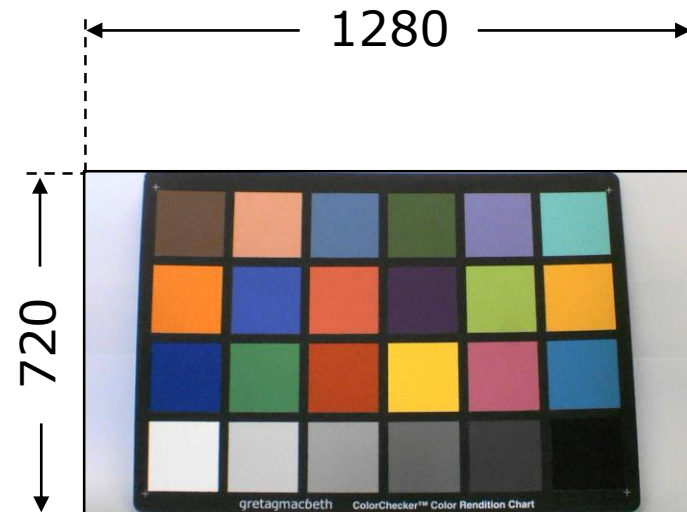
Selectable Output Size

- Selectable from 4 kinds of screen resolutions (2 kinds of aspect ratio)

| Image Size (H x V) | Aspect Ratio | Resolution |
|--------------------|--------------|-------------|
| 1280 × 960 | 4:3 | Quad-VGA |
| 1280 × 720 | 16:9 | HD 720p |
| 640 × 480 | 4:3 | VGA |
| 320 × 240 | 4:3 | Quarter-VGA |



Aspect Ratio 4:3

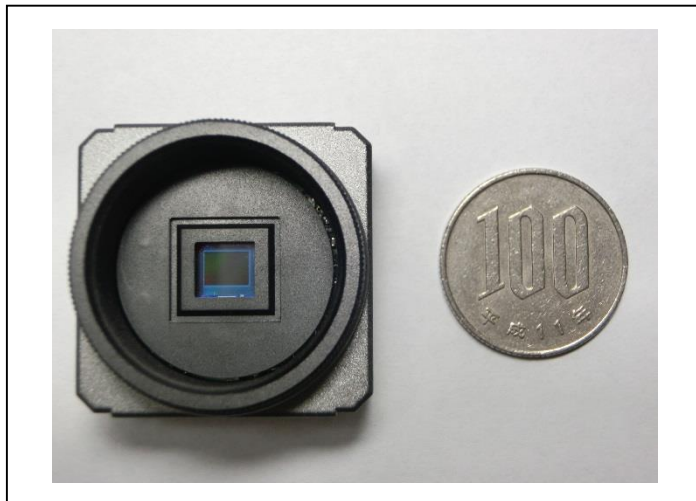


Aspect Ratio 16:9



Compact

- Compact Design
32(W) × 32(H) × 23(D) (mm)
- Light Weight
Approx. 35g
- Options (Sold Separately)
Camera Stand, Mount Adaptor and more





Other Highlights

- USB Bus Power
Dispense with an External Power Source
- USB Video Class
Plug and Play
- Various Function Settings
Following function settings are changeable on requests.

| | | | | | |
|--------------|-----------|------|-----------------|-----------|-------------|
| Brightness | Contrast | Hue | Saturation | Sharpness | Gamma |
| WhiteBalance | BackLight | Gain | FlickerLessMode | Shutter | SlowShutter |

- Capable Updating F/W
The latest F/W Updates & Downloads are available on our website. (<http://www.watec.co.jp/index.html>) (TBD)
- Confirmed EMC Test Standards
Acquisitions: FCC Part15 Class B / EN55032 / EN55024